

Luna lounge chair

by Ramón Esteve

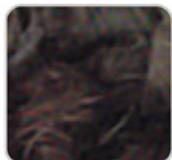
Luna channels the revolutionary spirit of icons such as Verner Panton and Joe Colombo. With its use of avant-garde materials and bold forms, Luna is an ode to the democratisation of design, blending functionality, striking aesthetics and a timeless elegance that redefines sophistication in contemporary furniture.



VONDOM

color combination.

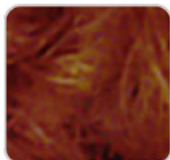
SUANCES Ref. 54850CO



black 10315



garnet 10307



clay 10306



antrahacite 10314



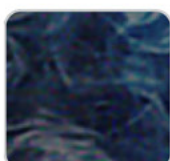
mustard 10305



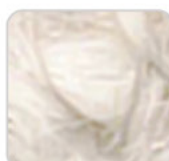
gray 10313



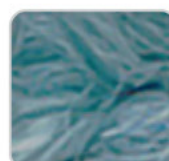
camel 10304



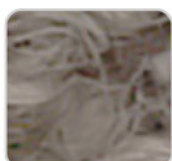
blue 10312



cream 10303



ocean 10311



tortora 10302



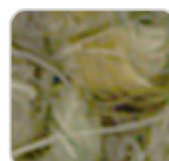
green 10310



ecru 10301



olive 10317



jade 10309



white 10300



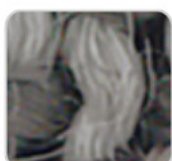
peach 10316



brown 10308

Bocle fabric, which stands out for its warmth and softness, with matching colors that add depth and elegance.

RIBADEO Ref. 54850CO



antrahacite 10334



mustard 10325



gray 10333



camel 10324



blue 10332

VONDOM



cream 10323



ocean 10331



tortora 10322



green 10330



jade 10329



ecru 10321



mint 10337



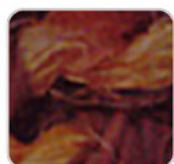
brown 10328



white 10320



olive 10336



garnet 10327



peach 10335



glay 10326

Soft fabric with marbled yarns of different thicknesses that create a rich and visually interesting texture. Its Linen look adds a touch of natural style.

LOURO

Ref. 54850CO



antrahacite 10354



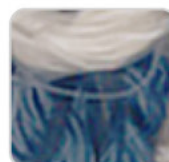
clay 10346



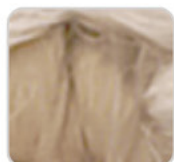
gray 10353



mustard 10345



blue 10352



camel 10344



ocean 10351



cream 10343



green 10350



tortora 10342



jade 10349



brown 10348



olive 10356



garnet 10347



peach 10355

Soft and versatile fabric, which presents a neutral base color that makes it easy to

VONDOM

combine with different colors and fabrics.

ALTEA

Ref. 54850CO



tortora 1102



white 1100



ecru 1111



cream 1103



camel 1120



clay 1122



gamet 1106



brown 1104



jade 1125



ocean 1123



blue 1114



gray 1101



anthracite 1124



black 1105

Soft outdoor fabric with leather-like texture.

AROUSA

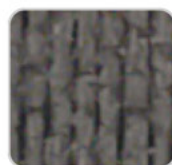
Ref. 54850CO



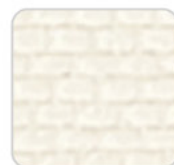
ecru 1221



white 1219



tortora 1209



cream 1220



camel 1230



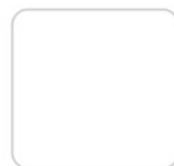
clay 1231



gamet 1223



brown 1214



jade 1235



blue 1222

VONDOM



gray 1208



anthracite 1210

Soft outdoor fabric with shiny finish.

Ambients



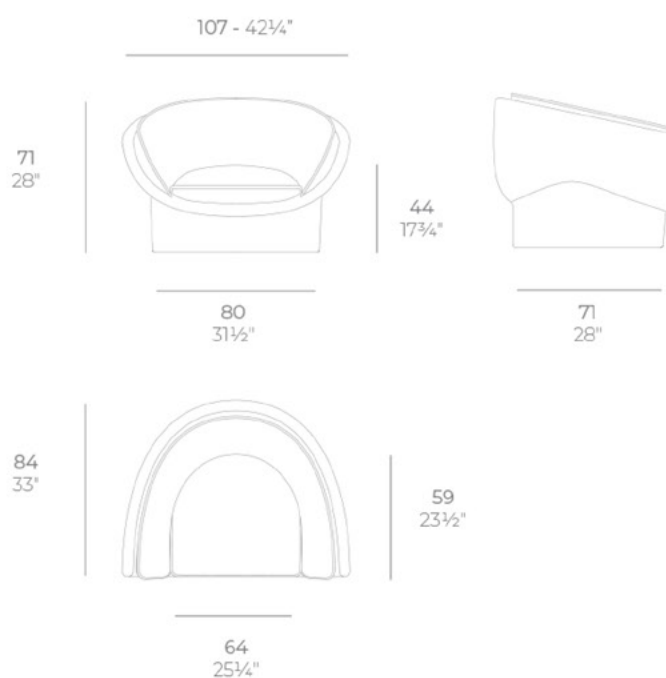
Info

Description

The Luna armchair, designed by Ramón Esteve, redefines outdoor luxury with its 100% recyclable polyethylene structure and advanced rotational moulding techniques.

Its cushions, with high-density polyurethane foam and synthetic fibre, offer unrivalled comfort.

Weight: 18 Kg



LUNA Butaca
LUNA Armchair
ref. 54850

Finishes

finishes

BASIC

Ref. 54850



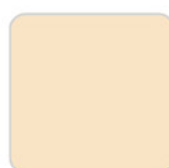
white 2001



ecru 2003



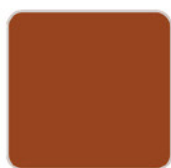
tortora 2004



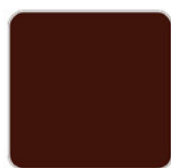
cream 2017



camel 2020



clay 2022



garnet 2015



brown 2008



green 2016



blue 2018



gray 2005



anthracite 2006



black 2002



ecru granite



cream granite



ice 2101

Matt Polyethylene

LACQUERED

Ref. 54850F

VONDOM



white 3101



ecru 3103



tortora 3104



cream 3117



garnet 3113



brown 3125



green 3116



blue 3118



gray 3105



anthracite 3106



black 3102

Lacquered Polyethylene

lighting

WHITE LED
Ref. 54850W



ice 2101

White internally lit unit with LED technology. Available only in matte ice white finish.

RGBW LED
Ref. 54850L

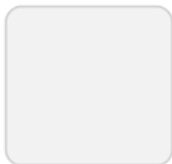


ice 2101

Unit with internal lighting with RGBW LED technology and remote control unit for switching colors. Available only in matte ice white finish. Remote control included.

RGBW LED DMX

Ref. 54850D



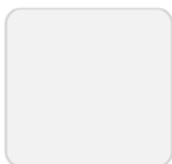
ice 2101

Unit with internal lighting with RGBW LED technology and remote control unit for switching colors. Also controlled by DMX-1024 (wireless), enabling communication between one or more products simultaneously via the DMX transmitter (not included). There are two options to choose from: Professional XLR DMX and Home WIFI DMX. (Remote control included).

Optional battery

RGBW LED BATTERY

Ref. 54850Y

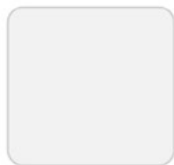


ice 2101

Unit with internal lighting with battery-powered RGBW LED technology. Includes charger and remote control for switching colors and charger. Available only in matte ice white finish.

RGBW LED DMX BATTERY

Ref. 54850DY



ice 2101

Unit with internal lighting with RGBW LED technology and remote control unit for switching colors. Also controlled by DMX-1024 (wireless), enabling communication between one or more products simultaneously via the DMX transmitter (not included). There are two options to choose from: Professional XLR DMX and Home WIFI DMX. (Remote control included).

fabric

GETARIA

Ref. 54850CO



anthracite 10043



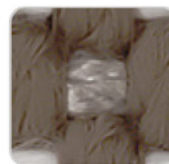
blue 10024



gray 10042



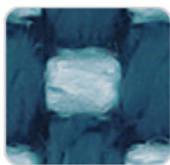
ocean 10023



dune 10009



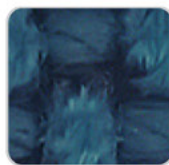
white 10041



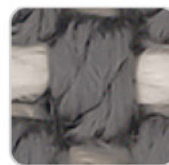
emerald 10016



granite 10008



green 10053



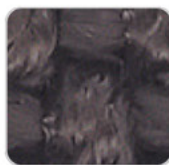
moon 10040



niord 10015



oasis 10007



brown 10050



aphrodite 10013



pearl 10006



tortora 10048



terra 10039



aquamarine 10003

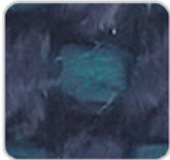


cream 10047



iceberg 10037

VONDOM



oversea 10002



garnet 10046



camel 10033



black 10044



gallant 10025

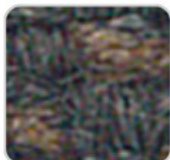
Premium high density 100% acrylic fabric, available in a wide range of colors.

BAIONA

Ref. 54850CO



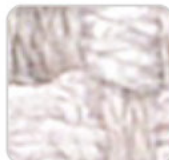
ecru 10101



anthracite 10114



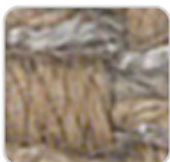
clay 10106



white 10100



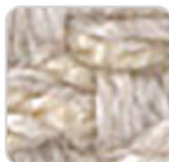
gray 10113



camel 10104



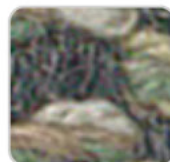
blue 10112



cream 10103



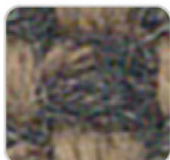
ocean 10111



green 10110



jade 10109



brown 10108



tortora 10102

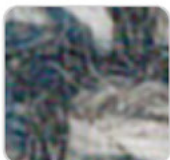


garnet 10107

High density 100% acrylic fabric, which provides a solid feel. It has an irregular pattern that adds a handcrafted touch.

CALELLA

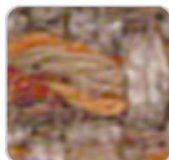
Ref. 54850CO



blue 10127



jade 10126



clay 10125

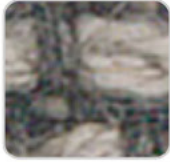


mustard 10124



cream 10123

VONDOM



tortora 10122



anthracite 10129



ecru 10121



gray 10128



white 10120

PFAS-free 100% acrylic fabric with a rich and unusual texture and an exceptional softness, which enhances the comfort of the furniture.

FISTERRA Ref. 54850CO



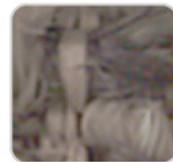
cream 10132



white 10130



ecru 10131



tortora 10135



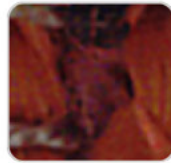
camel 10134



peach 10146



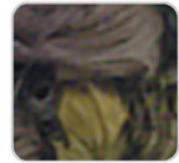
clay 10137



garnet 10138



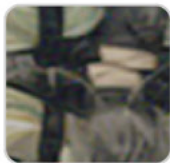
brown 10136



olive 10145



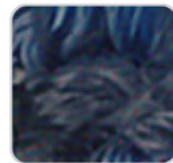
jade 10139



green 10140



ocean 10141



blue 10142



gray 10143



anthracite 10144



black 10147

100% acrylic fabric, with a distinctive irregular marbled pattern and a soft feel.

PORTONOVO Ref. 54850CO

VONDOM



ecru 10151



gray 10163



white 10150



blue 10162



ocean 10161



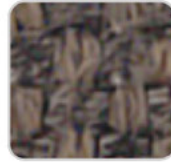
green 10160



jade 10159



mustard 10155



brown 10158



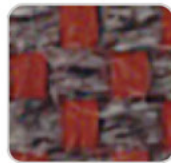
camel 10154



cream 10153



black 10165



garnet 10157



tortora 10152



anthracite 10164



clay 10156

100% acrylic fabric, with a flat and simple design, which adapts to any decorative style.

ZUMAIA

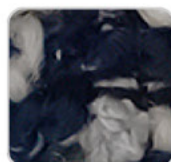
Ref. 54850CO



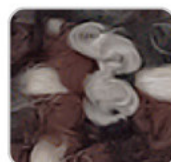
black 10205



green 10204



blue 10203



garnet 10202



cream 10201



white 10200

Elegant 100% acrylic fabric, with a soft terry, pleasant to the touch and a unique